

San Diego Electric Railway Association
 PO Box 89068
 San Diego, CA 92138
 (619) 699-8690
 April 2005

Check us out at our web site:
www.sdera.org

Out with the Old...

Dort Marquez's Superior Movers hauled the Bellingham Birney out of Old Spaghetti Factory (above), and down to the National City Depot (below). The car was donated to SDERA by attorney Sam Judd. President Jim Price and Harlan Hatz each con-



Chuck Bencik Photo

tributed \$1000 for the move. Recently students at SDSU's brand new subway station saw one of the first new S-70 trolley trains on a test run.

...IN WITH THE NEW...



...and

...Back to the Future?



Photo by Stuart Rudick

Inside this issue:

A red Valentine trolley for National City was a great photo op for pros and amateurs. Sample a few scenes 1 to 5

Speeder and track rec clubs can help keep short lines alive 2

Can SDERA help bring PCCs back to downtown San Diego? 3

PREZ SEZ: new toys in the yard bring tons of fun for everyone, and projects galore 4-5

Order books, videos and gifts by mail 6&7

A busy Spring & Summer with Railroadiana, rail excursion, Sundowners, plus the monthly meetings 7

Get on the list for the Green Line Excursion expected June 25th! 8

San Diego Electric Railway Association

- Jim Price, President
- Mike Reading, Vice President
- Chuck Bencik, Secretary
- Tom Matson, Treasurer
- Directors: Gene Calman, Chris Higgins, Gary Johnson
- Chris Higgins, Webmaster
- George Geyer, Bookstore
- Chuck Bencik, Editor

Dort Marquez Sr. supervises jacking the Birney from tracks, inside Old Spaghetti Factory.



Bellingham Birney 357 crosses MTS trolley tracks at 5th & Harbor, bound for its new home in National City.

LOCAL RECREATIONAL RAILROAD GROUPS KEEP SHORT LINE ROWs FROM BEING SCRAPPED

By Larry Bowler, President

Recreational Railroad Coalition Inc.

Recently an article was posted to these lists and bulletin boards describing the threat that can arise to a short line railroad when a branch line is allowed to lay inactive. It was pointed out that many small boutique railroad companies are not able to fund the maintenance of way activity which will continually establish the viability and ownership of the rail corridor.

That article, which I authored, also described the value that a recreational railroad organization can offer to a short line railroad company through an exchange of light maintenance of way assistance for the privilege of recreational, historic, track inspection motorcar access.

Weed control, theft of spikes and ties, vandalism, unauthorized trespassing, etc., are some of the controls that a nationally certified local section of speeder owner/operators can propose to the rail road company in exchange for track authority.

A track that has lain dormant for decades undergoes a change in the minds of neighboring property owners, which can cloud the issue of ownership and generate a growing attitude that the tracks were built for a time in history that no longer exists. With no rail activity many railroad deeds and rights of ways have clauses that revert the ROW back to the original owners. Maintenance of way speeders can eliminate that condition. Maintenance of way is railroad activity.

There are 3-4 operational recreational railroad associations that now

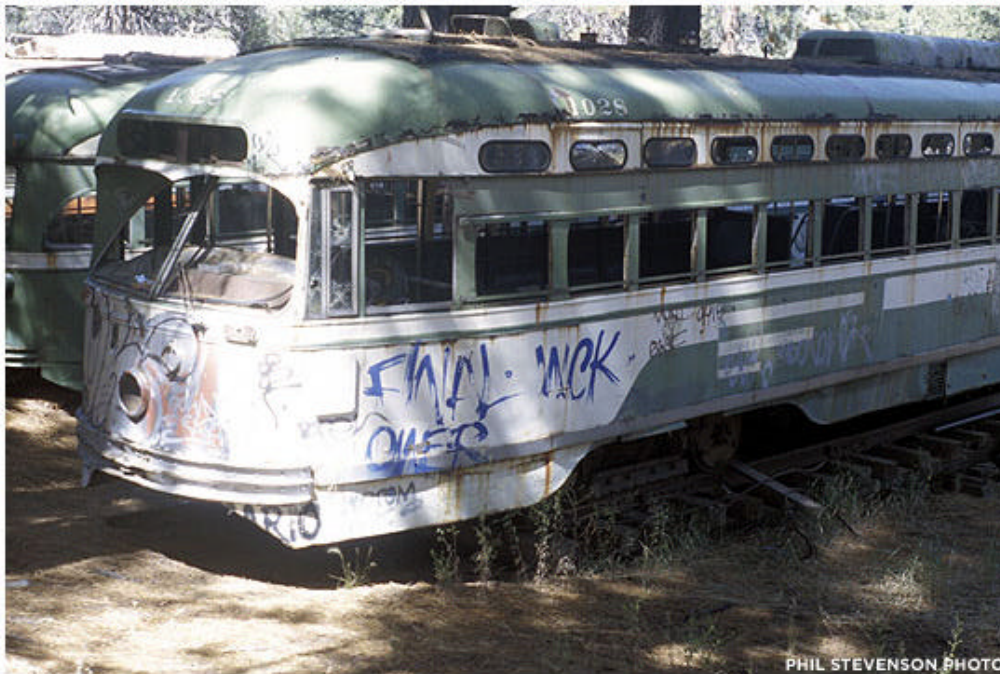
enjoy access to the rails for which they have made an arrangement. Two additional railroad branches in California are in the process of initial negotiations. The goal of the local groups is to lease or otherwise gain access to the rails. Not only does this offer an option to the owners of the rails, it reverses the pattern of seeing rails removed and scrapped.



Channel 8 interviews Jim Price as workers continue extracting the trolley at 6th and K.



Want to Bring PCCs Back to Downtown San Diego? MTS's Goddard says: Donate Now and Help Make it Happen



attention, but the opportunity to make a dream come true is now at hand.

Secondly, the cars would be brought and stored in the San Diego trolley yard. At that time the cars would be evaluated for restoration. Go to the web and check out the Market Street railway organization in San Francisco at these sites:

<http://www.webcastro.com/fline.htm>

<http://www.streetcar.org/line/streetcars/>

<http://www.streetcar.org/news/2003/haveenough/>

Just look at where they started and where they are now. Can it happen here?? Absolutely, but it will take vision and a lot of dedicated members to make it happen. Would they be painted like old San Diego electric PCCs? Yes, they would be. Just imagine PCCs running again along C street, the Bayside and Park Boulevard! Currently \$1,500 has been raised. We need your help. It is now or never!

Former (and future) San Francisco Muni 1028 rests in Gunnar Henriouille's Tahoe Valley Lines storage yard in South Lake Tahoe, CA. It is one of 4 sold to Market Street Railway for donation to MUNI for F-line service. Locals Andy Goddard and Harry Mathes say \$7000 would bring two PCCs to San Diego.

By Andy Goddard, Safety Manager, San Diego Trolley

In 1949 the last San Diego electric PCC streetcars were silenced forever, or were they?? Well, there is good news for those who want to see a PCC car run again here in San Diego. Harry Mathes, former San Diego city councilman, and I have an idea that could make that dream happen—with your help, of course. The dream to have PCCs running on the current San Diego trolley loop downtown can happen sooner than you think. Two former San Francisco PCC 1100 series trolleys are available but

donations will be needed to get them here. \$7000 needs to be raised to have them trucked to San Diego and, with the efforts of many of you, it can happen, maybe as

soon as this summer.

Plan One is to get them here to San Diego first. The cars have not been in operation since the late 70s and they will certainly need

Birney Car being towed down Harbor Drive, south of the rail overpass, enroute to National City.



Board of Directors Meeting Schedule

Normally held monthly on the 2nd Wednesday, at 7 p.m. at National City Depot, [2 blocks west of Interstate 5 and Bay Marine Drive] Next meetings : **April 13, May 11, June 8, July 13, August 10.**

The Prez Sez:

OLD SPAGHETTI FACTORY CAR BRINGS FLOOD OF PUBLICITY, NEED FOR A CAR BARN

By Jim Price

As reported in the last newsletter, SDERA member Sam Judd bought at auction the red and white Birney streetcar body which had graced the Old Spaghetti Factory (OSF) for over 30 years. Sam generously donated it to SDERA. On February 14, 2005, history was made as the Birney streetcar body was extracted from OSF and trucked to the NC Depot. Thanks to **Maria Arcega Dunn**, the National City Public Info Officer, and Secretary **Chuck Bencik**, we received extensive publicity from TV stations and print media, especially channel 8 and the Union-Tribune.



Twisting thru the gate, the 88 year old trolley body encounters the 123 year old railroad Depot. Tortuous turns made wrong-way entry down 23rd Street necessary.

WE (FINALLY) HAVE A NEW LEASE ON THE NATIONAL CITY DEPOT. NOW WHAT?

As of March 22, we have a new lease on the NC Depot with the City of National City. There are two changes of significance:

upstairs, and consolidate our materials into the southeast room. Thanks to **Jim Anderson**, **Chris Higgins**, **George Geyer**, and others for making the move.

Our primary renters, **Robert Baxter and Missy Cheeseman** (a.k.a. "the artists") will remain in their upstairs rooms.

FUTURE PROJECTS:

1) **SD Trolley "EXCURSION 2005"**. As of this writing, the San Diego Trolley expects to have its inaugural run of the Mission Valley East Extension on July 9. SDERA has had a proud tradition of pre-revenue-service runs on new trolley lines, and this one will be no exception. We expect to take our Excursion 2005 on June 25. But this date is subject to change. **Jim Papulas** has the lead on this to put the trip together, and get out the publicity. More information to follow, but don't miss this! [More on p. 8]

2) **RAILROADIANA**. We have decided to hold a one-day Railfair event on August 6 at the NC Depot. **Mike Reading** is leading the committee to organize the event. The tentative plans

[continued on page 5]



This type of building is needed to serve as a 2-stall "streetcar barn" for SDERA's 2 vehicles. If you wish to contribute funds or help, call Jim Price [619 787 4148]

We are now trying to take advantage of this publicity by approaching some companies to get money to build a car barn for both the Birney car and "Herbie," our VW Streetcar-on-Wheels. We're thinking of something like a 2-stall RV garage. But it needs to be a temporary structure. If any of you have specific experience with such buildings, please contact Jim Price at 619-787-4148.

The new lease is only for 2 years. So we will need to focus on near-term projects as opposed to longer-term ones. And we have to do all our own maintenance – inside and out.

We have a new building occupant: the MRW Group. MRW, the lead developer for the new hotel to be built across the street from the Depot, will be leasing a room upstairs in the Depot. Mr. Ivar Leetma, the MRW attorney, will be the primary user of the room. We hope that we, SDERA, will be able to participate with Mr. Leetma as MRW prepares a Master Plan for the area around the Depot.

In preparation for MRW's occupancy, we have had to vacate the southwest room



Maria Arcega-Dunn, National City Public Information Officer, and City Council members Luis Natividad and Rosalie Zarate were on hand to welcome the Birney car.



Channel 8's Carlo Cechetti did a live feed on the CBS noon TV news. Retired NBC producer/cameraman Stu Rudick looks on.



Danny Almaraz says it's okay. Photos by Chuck Bencik

The Prez Sez — from p.4]

include a swap meet, hand-car races, a night-time showing of an historic movie, and numerous day-time events.

We need many folks on the committee to make this event a major success. Please contact Mike if you're willing to help.

3) Exhibits inside the Depot. The time has come to get on with creating some high-quality, informative exhibits for the inside of the Depot. A number of you indicated in the recent survey a willingness to help on these. **Mike Reading** and **Jim Price** are working on layouts, exhibit materials, etc. Jim has also begun discussions with a graphic designer in National City who has done some table-top displays for the NC Chamber

of Commerce. If someone would like to be 'champion' of this project, please raise your hand!

4) National City Sundowner presentation to Chamber breakfast. Jim Price has been attending the monthly National City Chamber breakfasts for several months. Others have also attended on occasion. At each breakfast there is a presentation, usually by someone in the community. Jim is scheduled to be the speaker at the breakfast on Wednesday, May 18th.

We would like for as many of you as possible to attend that event. It's at 7:30 a.m. at the Martin Luther King Community Center, 140 E. 12th St., National City. Cost is \$10 per person.

5) Then on Thursday, May 26th, we are hosting NC Chamber's monthly

SUNDOWNER EVENT AT THE DEPOT. The folks from National City Transit will be co-hosting. The Sundowner is an after-work social gathering for Chamber members. It's up to us to provide some munchies and drinks. **We would also like for as many of you as possible to attend this event.** It's from 5 to 7 p.m. at the Depot. Jim Price will lead the charge, but will need setup help starting at 4 p.m.

These events are excellent opportunities for us to get NC community leaders more aware of who we are, where we are, and what we are trying to accomplish.

Now you can order your Rail and Trolley Videos by Mail, and Help SDERA build a great Rail and Trolley Museum

CLOTHING

SDERA polo shirt, heavy woven 100% cotton, white, short sleeve, embroidered trolley above pocket, **\$21.00** each.

SDERA T-shirt, cream, SDERy logo imprint on front, green/cream trolley imprinted on back, **\$12.00** each

Railroad engineer's caps, grey/white pinstripes, **\$4.95** each.

SDERA T-shirt, white, green/cream trolley imprinted on back, **\$10.00**

BOOKS

The San Diego Trolley, by Gena Holle. History of the Red Trolleys, beginning 1990s. B&W and color photos, 104 pp. **\$24.95**

Pacific Electric Railway

Vol. 4, Western Div: 137 pp, B&W photos. **\$39.95**

Vol. 1, Northern Div., **\$29.95**

Vol. 2, Eastern Div., **\$32.95**

Vol. 3, Southern Div., **\$39.95**

Streetcar Scenes of the 1950s in Color, by LeRoy O. King, Jr. In color: 128 pp. of trolleys in 24 cities across the US. Great gift for the trolley fan. **\$54.95**

Santa Fe: The Railroad Gateway to the California West, by Donald Duke. Vol One, 288 pp, Chicago-Los Angeles-San Diego, loaded with B&W photos. **\$59.95**

Tourist Trains (38th Annual Guide to Tourist Railroads and Museums). 482 pp., illustrated. **\$9.95**

Southern Pacific in Transition, by Bill Shippen and Joe Shine. 160 pp., mostly color, tons & tons of freight locomotives, scenic pictures and data, c. 1996(?) **\$49.95**

Old Trolley Cards. Ed.: K. P. Fletcher & John Rossman. 24 full color vintage postcard reproductions; serrated, can be cut out and mailed to your trolley fan friends (limited supply) **\$4.95**

Electric railways Around San Francisco Bay, comp. Donald Duke

Vol. One: BART, East Bay Transit, Key System, SP Interurbans. 71 pp., B&W photos: **\$24.95**

Vol. Two: Market St. Railway, Municipal Railway of SF, Northwest-

ern Pacific RR., Petaluma & Santa Rosa RR, Sacramento Northern RR, SF Napa & Calistoga RR, Shipyard Railway: **\$24.95**

Pioneers of Electric railroading: Their Story in Words & Pictures, ed. by John R. Stevens. 221 pp., illus. Earliest electric railway systems, inventors, trials & triumphs, many technical illustrations. Valuable historic work. **\$29.95**

Coast Lines Depots – Los Angeles Division, by Lee Gustafson & Phil Serpico. B&W photos. C. 1992, much illustrated, some depot plans. 232 pp. **\$49.95**

San Diego & Arizona – The Impossible Railroad, by Robert M. Hanft. 140 pp, **\$99.95**

The Railroad Book, story & pictures by Boyd Smith. 55pp. Children's picture book. Reproduction issue of 1913 illustrated. "Bob and Betty learn about trains when the railroad opens up a line behind their garden fence." **\$15.95.**

Trains, by Julian Holland. Large, color illustrated, picture mini-encyclopedia history, old to modern trains, futuristic railroads the world over, from A to Z for the young at heart. 40 pp. **12.95**

VIDEOS

California Electric Trilogy (Key System, Sacramento Northern, Pacific Electric). Pentrax #CAL3, 38 min. **\$29.95**

Muni's F Line. 2001 Survey of San Francisco Streetcar collection, 80 min, + previews, [Highball Productions], **\$29.95**

Los Angeles Streetcars, the Final Years. W & S Lines, Yellow Cars of the 1950s. Pentrex LA-Transit. 35 min. **\$29.95**

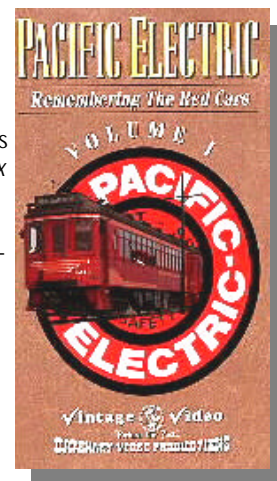
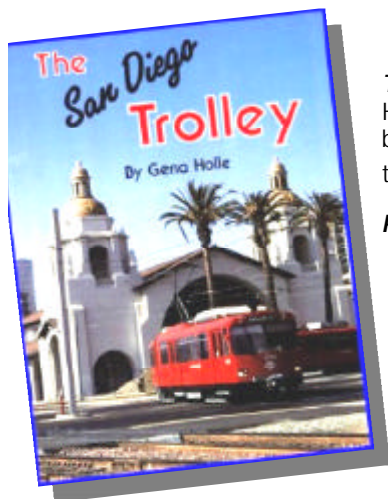
Pacific Electric – Remembering the Red Cars. Vol. 1. 70 min. Catenary Video 10-PE. **\$39.50**

Santa Fe Vintage Diesels. New Mexico, Kansas & Illinois in the 1960s and 1970s. 50 min. Pentrex #FFS01. **\$19.95**

Santa Fe: The Diesel Locomotive. Its servicing, maintenance & repair. Sacramento, Barstow and Winslow Santa Fe shops servicing in the 1950s. Pentrex #SFDIESEL. 25 min. **\$19.95**

Union Pacific: Vintage West. Charles Smiley, A-120. The WP-UP merger, 1960 to 1980. 38 min. **\$28.50**

Steam to Los Angeles – UP 8444, SP 4449. 50th Anniversary of Los Angeles Union Passenger Terminal. Cheyenne to LA rail trip. Pentrex, 75 min. **\$24.95**





PHOTOS:

SDERy PCCs 528, 525, 510 on San Diego Streets. 524 at the Santa Fe Station. **Cars 447, 405** on the 7 & 11 lines, Park Blvd, University Ave. B&W 8"x10", excellent quality. **\$5.00** each, 3 for \$13.00

AUDIO CDS

Thunder on the Steel: HS 951. Railroad Songs. **\$14.98**

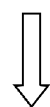
Diesel Power: Sounds of diesels on SP, UP, and AMTRAC, 1995-2001. HS 22. **\$14.98**

UP Challenger: World's Largest Operating Steam Locomotive. **\$14.95**

Track Talk. Sounds of train cars on pre-welded-rail, various cars. **\$14.95**

TAPE CASSETTE: Night Train - Classic RR songs. Rounder C1144. **\$9.95**

... and there's lots more merchandise to choose from, at your SDERA Book and Gift Store. Call and ask about our many other titles and merchandise. Call the Depot at **619-474-4400**. All four credit cards accepted [DISCOVERY, VISA, MASTER CHARGE, AMERICAN EXPRESS]. California residents: **add 7.75% sales tax.** (Multiply total items' prices by 1.0775, then add on Shipping and Handling charges: add **\$5.00**, for first item, each additional item: **\$1**. Order today!



ITEMS SELECTED:	ITEM #	QUANTITY	UNIT PRICE	TOTAL PRICE

Mail this form, with your check (if preferred) to:

SDERA Bookstore
PO Box 89068
San Diego, CA 92138-9068

MERCHANDISE SUBTOTAL

California Sales Tax: 7.75% Add Applicable Sales Tax
Shipping & Handling for Standard Ground Orders
TOTAL

SHIP TO:

Name _____
Address _____ Apt. # _____
City/State/Zip _____
Message _____
(For gift orders only.)

PAYMENT METHOD:

Check or money order, made payable to
 Charge my: AMEX VISA MASTERCARD DISCOVER
Card # _____ Exp. Date: ____/____/____
Signature _____
(For credit card orders only.)

SDERA Depot Doings for the Coming Year

Membership Meetings are usually held on Second Saturdays, National City depot, [2 blocks west of Interstate 5 and Bay Marine Drive] 7:30 P.M. Optional: dinner at Keith's Restaurant, 3rd and National City Blvd., National City, at 5:00 P.M.

April 9: Toronto videos by George Geyer, from his 1988 visit. PCC cars, with the beginnings of Light Rail Transit.

May 14: John Fry, Pacific Beach Historical Society, shows slides of San Diego urban mass transit, from horsecars to electric trolleys, and from busses to the modern Red Trolleys. Fry's slides include rare WWII era photos, including New York trolley cars arriving in original livery.

June 11 TBD

July 9: 8mm movies on streetcars by Norman Johnson, a former motorman of Los Angeles Railway and one of the principals in Orange Empire Railway Museum.

August 13 Don Brown's traction slides. Don is a retired bus driver, a past caretaker of Orange Empire Railway Museum, and a principal founding member in OERM since its beginning in the mid 1950s.

Special Events ...

May 18: National City C of C Sundowner, 7:30 a.m. at M. L. King Community Center, 140 E. 12th St. Jim Price will be speaker.

May 26: Sundowner at the NC Depot. Setup at 4 pm, social and munchies 5 to 7 pm. Co-hosted by National City Transit.

June 25: SD Trolley "Excursion 2005," [tentative plan] Pre-revenue service run for

Railfan Facts ... by George Geyer

56 years ago, on April 24, 1949, SDERy quit trolley routes 2, 7 and 11... **50 years ago,** on May 22, 1955, Los Angeles Transit Lines Routes 5, 7, 8, the south end of 9, F, and the North end of W were abandoned ... and **50 years ago,** on June 19, 1955, Pacific Electric Glendale-Burbank line ended service.

Mission Valley East Extension scheduled to begin July 9. Contact **Jim Papulas** for details. Also see back page.

July 4: Coronado parade. Joint event with Coronado Lions Club.

July 16: Train Riders Association of California [TRAC] Board meeting and members' conference at NC Depot.

August 6: SDERA Railroadiana, NC Depot. Swap meet, hand-car races, entertainment, night-time movie, various day events. **Mike Reading** heads committee. Volunteers and entries wanted.

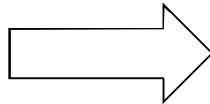


San Diego Electric Railway Ass'n
PO Box 89068
San Diego, CA 92138
(619) 699-8690

SDERA is at the historic National City Depot, off I-5 at Mile of Cars Way - take Bay Marina Drive West to Marina Way, then right. Open every Sat. and Sun., 12 noon - 4 PM. Depot phone: call 619 474-4400

We're on the
Web:
www.sdera.org

Non Profit Org.
U.S. Postage
PAID
San Diego, CA
Permit No. 2606



Return Service Requested

Attention Members: Please look carefully at the mailing label above. If your membership has expired, or will expire soon, please send your dues, and your tax deductible contribution, to SDERA, PO Box 89068, San Diego, CA 92138-9068. Thank you.

Plans being made for Green Line Excursion with SDERA likely on June 25



By Chris Higgins

The newest extension to the San Diego Trolley is tentatively scheduled to open on July 9th from Mission San Diego station in Mission Valley to Grossmont station in La Mesa. The Green Line extension starts near Mission San Diego and goes through Grantville, goes up the steep incline along I-8 into a tunnel at San Diego State University, passes Alvarado Hospital below Lake Murray and meets the existing Orange Line near Balti-

more and Fletcher Parkway. Our excursion, tentatively set for June 25, includes a tour of the MTS car shops downtown and a ride on the line a few weeks before it is open to the public.

Details will be published as they become available. But if you'd like to attend this event, contact Jim Papulas (jpapulas@sdera.org) for details and cost. Do it now! Let Jim know you want to go!!!