

SAN DIEGO ELECTRIC RAILWAY ASSOCIATION



August



2013

Trolley Lines

Lights, Camera..... Action !!!



Photo by Richard Finch

Dave Slater looks on as Joe Castanho and crew from Preposterous Films, set up for a day long shoot at the museum.

San Diego has a long history of film making.

Not only has San Diego the climatic advantage, but its varied scenic [sic.] settings, its tropical and semi-tropical vegetation, its mountains and valleys, and its seacoast all contribute to afford a variety of settings that would be hard to obtain anywhere else in the country.

As early as 1897, the Thomas Edison Company had cameramen traveling the length and breadth of the Golden State.

In February, 1898, an Edison "motion picture" crew shot a film entitled, Street Scene, San Diego, (California). The entire film was but twenty-five feet long and contained a glimpse of downtown San Diego and a double-decker trolley car taken from a fixed camera position. I believe that this clip is featured in the beginning of the 2010 PBS show about the history of the San Diego street car system, with our own Tom Matson, Ed Harold, George Guyer, and Dave Slater sharing the lime light.

The PBS show is at : <http://video.kpbs.org/video/2034783797/>

San Diego Electric Railway Association
DBA San Diego Electric Railway Co. Inc
922 West 23rd Street
National City, CA 91950
(619) 474-4400

In this issue:

PCC Car Project Update	page 2
President's Message	page 3
Happenings At The Depot	page 4
Restoring Car #530	page 5
3 Rail News	page 4
From the Desk of The Editor	page 8
Upcoming Events	Back Page

SDERA operates the historic National City Depot museum which is located at 922 West 23rd Street, National City, CA 91950 and is open Thursday through Sunday from 9 a.m. to 5 p.m.

Or visit us on the web at:

www.sdera.org

San Diego Electric Railway Association, Inc

- ❖ Dave Slater - President/GM
- ❖ Tom Carnes - Vice President
- ❖ Tom Matson - Secretary
- ❖ Jeff Trimble - Treasurer
- ❖ Jim Anderson - Director
- ❖ Mitch Beauchamp - Director
- ❖ Charles Smith - Director
- ❖ Mike Reneau - Director
- ❖ Chris Higgins - Director/ Web Master
- ❖ Sam Judd - Of Counsel
- ❖ Richard Finch - Editor
- ❖ Jody Surowiec - Editorial Staff
- ❖ Tom Sapien - Librarian
- ❖ Ron Sutch - Staff Photographer
- ❖ Bill Steinmetz - Groundskeeper
- ❖ Jim Anderson - Curator of Special Collections
Gift Shop Manager/ Facilities Director
- ❖ Tom Matson - Special Events/ Docent
Coordinator/ Membership Director

PCC Car Project Update

Dave Slater

Restoration Project Manager

Now on the web at: www.sdvintagetrolley.com



The reassembly of PCC #530 continues every Tuesday and Thursday, and, some days for me in between, gathering equipment and supplies. The workers are: Dan Kelly, Dennis Frazier, Jeff Trimble, with Ron Sutch as Staff Photographer.

During the installation of the side windows, Chuck Bencik, our “Window Master” was on hand, and made that phase run smoothly. This phase is now finished.

The seat frames are now all installed, and all the seat cushions that we have are installed, the front ceiling panel is installed, the battery tray, made by Art Aydelotte, has been installed.

All the right side skirting that we have has been installed, and we are now working on the installation of the left side skirting. This work is done by Dan, Dennis and Jeff, with me providing the tools, fasteners equipment, and technical advice on a

running basis. We are a very well oiled team.

Once we have installed the skirting that we have, we will be fabricating and installing the missing skirting pieces. The gong needs to be installed.

Then, I will make arrangements with LRV Maintenance to move the car outside so we can install the marker and brake lamp assemblies, and then, the retriever, and reinstall the cord to the trolley pole. After that, the front headlight and the windshield wipers.

LRV Maintenance is reinstalling the undercar relays they removed before we knew the car was leaving, also the operator’s switch console, and the standee windows, front and rear windshields, and destination sign glass, since our contractor that I got to donate all this for several cars, did not want to perform this reinstallation, and we don’t know

how to do this work. They will also install the front doors that they removed as a pattern for #529. The undercar inspection panels go up, and we are finished with this car! I think by September.

I am told that our next car is PCC#532, one of the two Philadelphia cars in our fleet. It is much newer, and has many upgrades.



Dave Slater photo

*Charter service for your gathering is available at almost any day or time with advance arrangements with Judy. For charter information and scheduling, please contact Judy Leitner at MTS.
(619) 557-4521*



PRESIDENT'S MESSAGE

By
Dave Slater

Since May, we have had a Major Project underway. It is called Project #531. We are getting PCC #531 donated to us from the San Diego Vintage Trolley, Inc.!

First, we must reassemble PCC #530 that we took apart some years ago. This work is in progress by yours truly and some of our members: Dan Kelly, Dennis Frazier, Jeff Trimble, and Ron Sutch as Staff Photographer.

This project is split into two phases. Phase One is comprised of raising money to have the car moved to our location from the car barn at 12th & Imperial Avenue, San Diego. The target amount is \$2,000.00. So far, we have raised nearly \$1,500.00, from the "Donate" button newly installed on our website: www.sdera.org as of Monday, July 8th.

Phase Two is comprised of body and paint work. Phase Two will cost \$12,700.00. Once we have reached the Phase One goal, monies will be placed in special "pools" for Phase Two.

Donors who wish to be named will be memorialized inside the car in a prominent place. All donations are tax deductible. Our Tax ID number is: 33-0202834. Checks should be mailed to our physical address at: 922 West 23rd Street, National City, CA 91950, attention: Jeff Trimble, Treasurer. None of these monies will go into the General Fund!

We have gotten donations from near and very far away. Some as far away as Canada & Florida. The donors so far are: Paul Copeland, Jeff Trimble, John DeLalla, Ross C. Robinson, Tom Matson, Charles Greene, Don Anderson, Peter Lucas, Roger Beckman, Dr. & Mrs. John Dunn, Tom Carnes, along with several who asked not to be named.

By the time you read this, I am sure there will be many more donors to this most important cause.

We have been looking for a PCC car for years, and of course, it will be painted in San Diego Electric Railway Co. colors. A Special Thanks to all of the donors!

Last Saturday, July 6th We hosted the director and crew from Preposterous Films, for a day long shoot. This is a no cost to us event, and the results will be a video put up on our website, an Infomercial, and some PSA's (Public Service Announcements) for local TV stations, in a major effort to bring more visitors to our Museum. Preposterous Films will then use our location to make a commercial film on their own. Last year they won an award for the 48 hour Film Festival. For those who have not heard of the 48 Hour Film Project, it is a wild and sleepless

weekend in which competing teams have a blast making a movie. Teams are assigned a character, a prop, a line of dialogue and a genre, that must be included in their short (4-7 minutes) film. Then all writing, shooting, editing and scoring must be completed in just 48 hours.

To learn more about the 48 hour project, you can go to : <http://www.48hourfilm.com/en/about/history.php>

The Union Tribune had an article that featured Preposterous Films and the 48 hour film project in the July 7 copy of the paper : <http://www.utsandiego.com/news/2013/jul/07/tp-48-hour-film-project-a-crash-course-in/>

You can also Visit Preposterous Films at their website and see some of the films they have made in the past at: www.PreposterousFilms

Having Joe and his crew donate their time, equipment and skill at story telling doing the PSAs for the museum is a definite win-win for both of us!

Come visit, and enjoy all the improvements in your Museum!

NATIONAL CITY DEPOT HAPPENINGS

Chuck Bencik, and his Grand Niece, Liz, finished the art work on the east side of our 1917 Birney Car #336 on the south display area. It is absolutely authentic, and looks wonderful! Many thanks, Chuck! By the time you read this, Chuck will have finished painting the road numbers on Vienna car #6890 on Track #2 North. We are so fortunate to have as a Life Member, a man with so many talents!



The 3 Railer News

The Toy Train Exhibit has gotten the Train Interface Unit working properly. A chip has been replaced along with a couple of diodes by Jim Osborne, the local service provider for Mike Train House (MTH).

This was a recall for a known issue on this unit. The trains can now be operated from the wireless remote as originally planned. The layout is looking to purchase a couple of power supplies, also known as bricks in the near future.

Charles Smith

We have received a donation of \$500 for this move from an un-named donor. We have received other smaller donations, and hope the donations keep coming in. After the \$2,000 for the move is received, then the unit will require a paint job, which will require more funds.

We even have a place to donate thru Paypal on our web site. Go to:

www.sdera.org

and look at the lower left hand corner of the first page.

Simply click on the Donate button, and follow the simple directions!

Thank you, Jeff Trimble, treasurer,
San Diego Electric Railway
Association

Also of note outside was the delivery of the new bicycle rack. This bike rack will hopefully be occupied by some of the dozens of riders that ride past the depot on the Bay shore Bike way.

Jeff Trimble photo

HELP WANTED

Volunteers are needed for the following jobs:

- 1) Docents/Cashiers
-training provided-contact
Tom Matson, (619) 846-9662
- 2) Data entry-library cataloging-
contact Tom Sapien, (619) 840-1592
- 3) Assistant to our Corporate Secretary.
- 4) Assistant to Special Events Coordinator.
- 5) Assistant to Webmaster- Chris Higgins.
- 6) Assistant to the Treasury Secretary

Interested parties please contact
Dave Slater dslater@sdera.org
OR (619) 222-5442

A Salute To Our Volunteers!

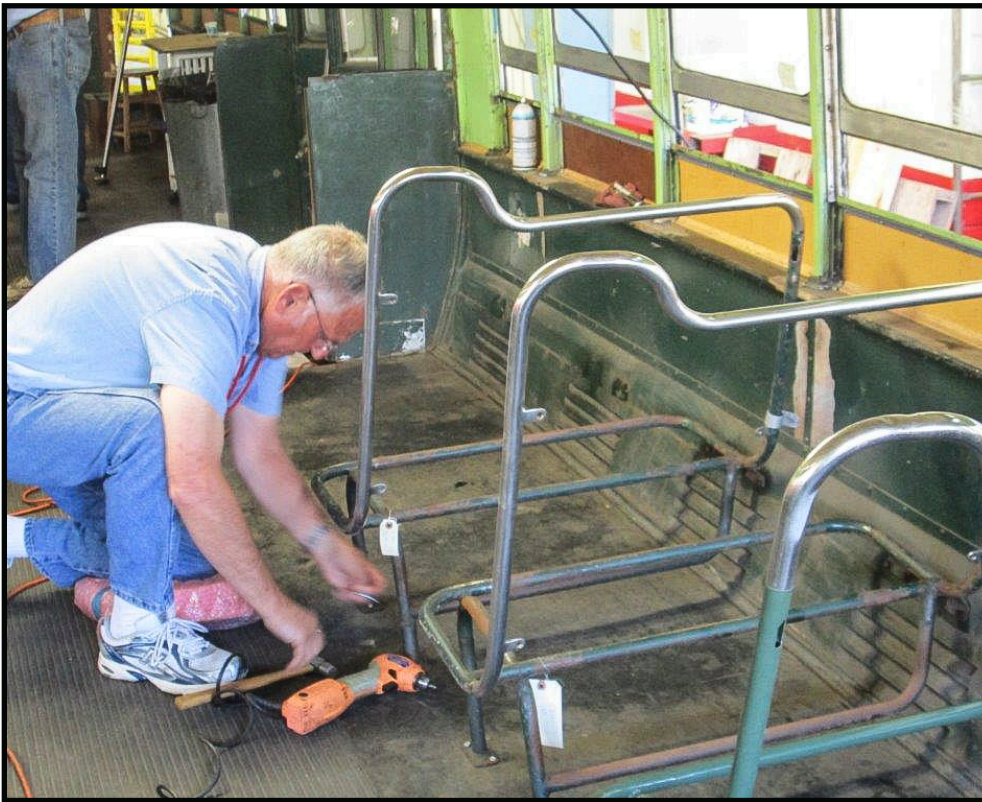
They are:

Dave Slater
Tom Carnes
Chris Higgins
Amanda (dog)
Tim Higgins
Jim Anderson
Tom Matson
Jim Price
Chuck Bencik
Randy Butler
Robert Butler
Mitch Beauchamp
Jeff Trimble
Mike Reneau
Richard Finch
George Geyer
Jason Ballard
Dan Kelly
Ron Sutch
Mitch Kaye
Gary Johnson
Sergio Lopez
Michael Ballard
Jody Surowiec
John DeLalla
Robert Baxter
Samantha (dog)
Missy Cheeseman
Keeper (cat)
Anthony Carideo
Kainoa (dog)
Sean McColgan
Sandy (dog)
Patrick McColgan
Scotty Lewis
Tim Lewis
Carl Lewis
Tom Sapien
"Pete" Pearson
Mike Quigg
Matt Zacharzuk
Bill Steinmetz
Conrad Gomez
Dr. John Dunn
Dale Evans (He)
Charles Smith
Hubert Jansen
Steve Mitton
Jason Ballard

**WE COULDN'T OPERATE
WITHOUT YOU!**
Thanks!



The reassembly of Car #530 Continues



Ron Sutch Photo

In recognition of donated funds for this effort, donors who wish to be recognized will have their names memorialized in a prominent place inside the San Diego Electric Railway #531.

There are two ways to donate towards this project. First, you can mail a check to the address below.

Another way, if you have a paypal account, is to go to our web site, at www.sdera.org and look on the lower left corner of the screen for the DONATE button. Just click on the DONATE button, and follow the simple instructions.

Please send your checks to:
San Diego Electric Railway Association
922 West 23rd Street
National City, CA 91950

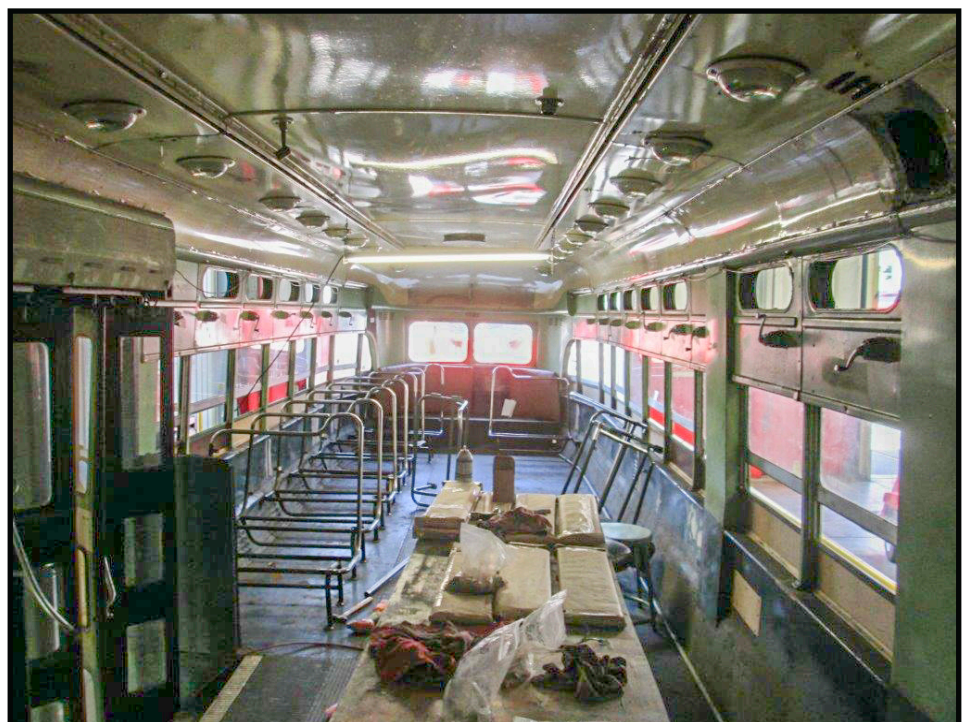
Thank you very much



Work continues on reassembly of car # 531 (ex Muni 1170) but we still need \$1,000 more to pay the transporters to move the car from the A Shop at 12th & Imperial in downtown San Diego, to our Museum in National City. All contributions are tax deductible since we are a California 501 (c) (3) Non Profit, Tax Exempt Charitable Corporation. Our Tax Exempt ID is: 33-0202834.

We have received just over \$1,000 of the \$2,000 needed to move the unit. Donations have come from Southern California, Ohio, and Florida.

Any donations in excess of our goal will go to paint the outside of the PCC.



Ron Sutch Photo

Editor's note:
Some time ago
Allen Weeks sent in
a few of photos from
his collection and
I have not had the
space until now to
publish them.
Thanks Allen



SDER 524 Line 2
Adams & 30th On 30th;
(above.)

SDER 401 Line 7 Uni-
versity Avenue;
(left)

SDER 524
Line 2 30th &
Adams





SDER 401
Excursion on the
30 th St. Bridge

SDER 401
Excursion
On
Broadway



SDER 409 Line
11 Adams Ave.
Terminal

**SAN DIEGO ELECTRIC RAILWAY ASSOCIATION,****DBA: THE SAN DIEGO ELECTRIC RAILWAY Co.**

A 501(c)(3) California Corporation • Tax Exempt ID: 33-0202834

P. O. Box 89068 • San Diego, California 92138

Irwin H. From

Spartanburg, South Carolina 29302

July 22, 2013

Dear Irwin,

Many thanks for your kind donation of \$50.00 toward Project # 531, a 1946 Saint Louis Car Company President's Conference Committee street car.

It is because of you, and people like you that we are able to accomplish many things for our Museum.

Your gift is tax deductible in accordance with current tax codes. You will see our tax ID number at the upper right of this letter.

Sincerely,
Dave Slater
President/GM

Little Known Fact About the National City Depot

If you have visited the depot in National City, you many have noticed a very nice safe from 1882.

The paint on the door is very faded, but the outer door is there, minus the lock. Also the inner door is there, but the vault is not open for public viewing. We need storage space.

What is not generally known is that there is another safe right on top of the downstairs safe on the second floor. Unfortunately the ornate outer door is long gone, but the inner door is there, propped up against a wall. This is not open to the public, because the steep stairs do not meet ADA standards.

story by Jeff Trimble.

FROM THE DESK OF THE EDITOR

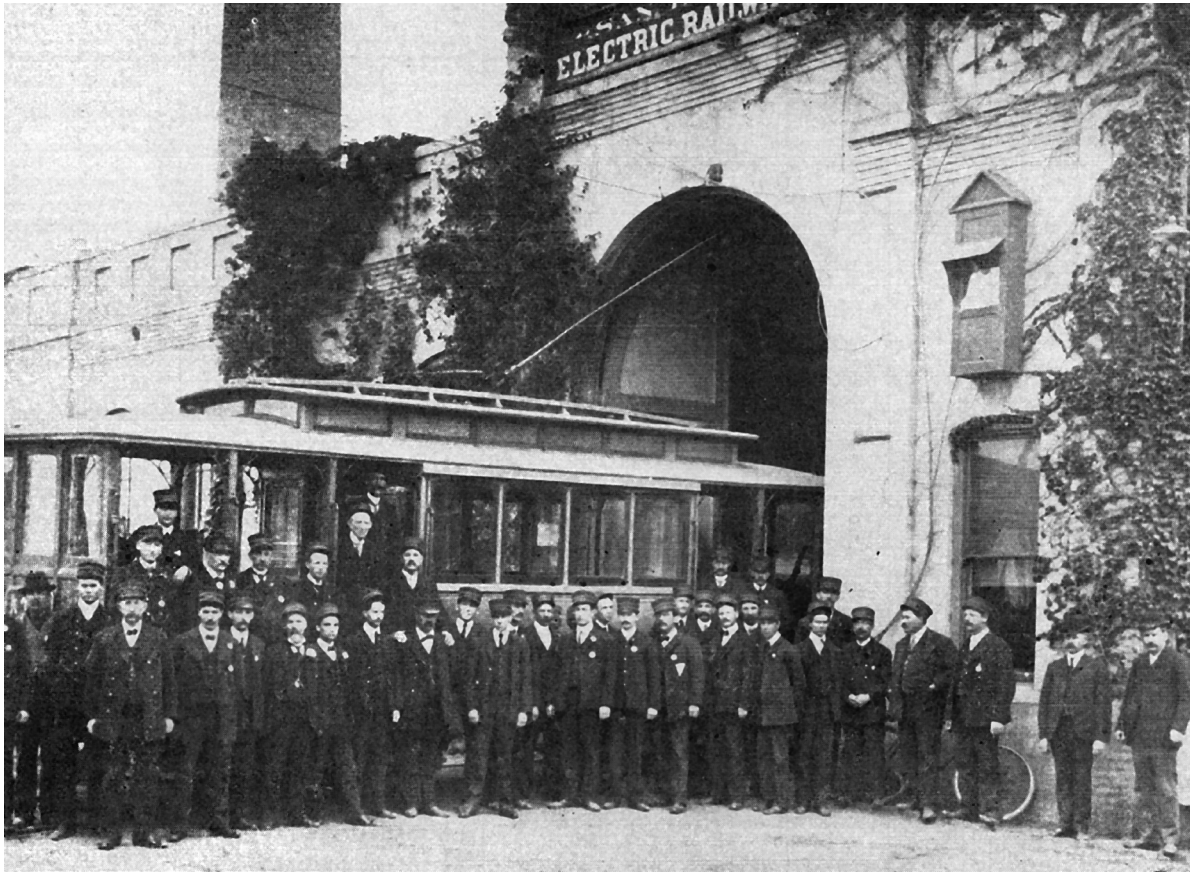


While I was searching for material for this issue I ran across a silent film (date unknown) about the San Diego Fire department that I found very interesting. I thought you might also

http://www.youtube.com/watch?v=_B6txp009Ys

I would like to thank Shan Lange of La Mesa whose grandfather worked for the San Diego Transit System; for her donation of a box of "Transit Topics" Dating from the 1940's to the early 1960's to the museum. It is because of you, and people like you, that our collection of artifacts.

transit topics

*Do you Remember When?*

Your nickel for street car fare was collected by the boys shown in the above picture, 'way back in 1904.

During the days when men were men, and women operators were unknown; a period when the car men were oft-times called by their first name by the passengers.

But, that was 40 years ago.

This picture was taken in 1904 in front of the car barn at the corner of Arctic and D Streets, now Kettner and Broadway. There were two car barns at the time, this one, and one at Seventh and H, now Market, Streets. The former had a capacity for holding 20 cars, and the other could take care of 15 cars. Each car could accommodate between 16 and 20 passengers.

The identities in the group cannot all be vouched for, so none are mentioned by name. A number of those in the picture are still alive and are on the company's retired list. Attention is called to the pose of the two stiff-armed iron-hatted gentlemen on the extreme right of the picture, and the hirsute adornment on the faces of some of the men was quite "classy" in those days.



LETTERS

SAN DIEGO ELECTRIC RAILWAY ASSOCIATION,



DBA: THE SAN DIEGO ELECTRIC RAILWAY CO.

A 501(c)(3) California Corporation • Tax Exempt ID: 33-0202834

P. O. Box 89068 • San Diego, California 92138

Mr. Don Anderson

Fort Lauderdale, Florida 33301

June 15, 2013

Dear Don,

We have just been alerted that you have made a \$500.00 donation to us for the acquisition of our PCC car, #531!

Many thanks! It is because of you, and people like you that we are able to meet the demands of expansion of our charitable organization.

You will see our Federal Tax Exempt ID in the upper right of this letter, and thereby may use this information as a tax deduction for this calendar year based on current tax codes.

Once again, Don, many thanks for your kind and generous donation toward Project #53 1.

Sincerely,

Dave Slater
President/GM

Operators of

The National City Historic Depot • 922 West 23rd Street • National City, California 91950 • (61



SAN DIEGO ELECTRIC RAILWAY ASSOCIATION, INC.



DBA: THE SAN DIEGO ELECTRIC RAILWAY CO.

A 501(c)(3) California Corporation • Tax Exempt ID: 33-0202834

P. O. Box 89068 • San Diego, California 92138

Mrs. Robert (Elaine) Rechs

National City, CA 91950

June 15, 2013

Dear Elaine,

Word has just come to me of Bob's death. On behalf of myself, my fellow board members, and many members who knew and loved Bob, we wish to offer our very best condolences.

Bob and I went back a long way as you know. His life stories are many and varied, as like most of us who are in our Golden Years. He and I shared many of these backgrounds, and because of our similarities, became good friends.

It broke my heart to see him disintegrating before our eyes. Hopefully there will be a cure for these maladies in our lifetimes.

Bob will be sorely missed by all who knew him. He is now in a better place, may God rest his soul.

Please do not hesitate to contact me personally, if there is anything I can do for you at this time.

Please also let us know about funeral arrangements, which, I am sure are pending.

Sincerely,

Dave Slater
President/GM
(619) 222-5442

Operators of

The National City Historic Depot • 922 West 23rd Street • National City, California 91950 • (619) 474-4400



San Diego Electric Railway Association
d.b.a. San Diego Electric Railway
PLEASE ADDRESS ALL WRITTEN
CORRESPONDENCE TO
922 WEST 23RD STREET, NATIONAL
CITY, CA 91950

Non Profit Org.
U.S. Postage
PAID
San Diego, CA
Permit No. 2606

SDERA is at the historic National City Depot,
off I-5 at Mile of Cars Way - take Bay Marina
Dr. west, right on Cleveland, go one block and
left on W. 23rd St and straight into the Depot
Open Thursday through Sunday, 9 AM — 5 PM.
Depot phone: call (619) 474-4400

To submit items to the Newsletter, contact : Richard Finch via e-mail (editor@sdera.org)
Items need to be submitted by the 15th of the month prior to publication. -- Next issue in September
Please send all photos in the largest size as possible. 2 or 3 meg file (about 1000 pixels on the longest side)
also include the names from left to right of people in the photos.

Attention Members: Please look carefully at the mailing label. If your membership has expired, or will expire soon, and you wish to renew your membership, or become a new member, we offer the following levels: Life, (for a single member) \$400; Family, \$35 (please include names); Regular (or Individual) \$25; Senior age 60 and up, \$15; Junior for ages 17 and below, \$15.

Checks can be made out to, SDERA and mailed to
SDERA, 922 West 23rd Street, National City, CA 91950

Upcoming Events

Monthly meetings are normally held at 7:30 PM
on the 2nd Saturday at the National City Depot.
Optional no host dinner at The Barbeque Pit
Restaurant - 920 E. Plaza Blvd, National City at
5:30PM about 1 block east of Highland Ave.
and Plaza Blvd.

Plan to arrive at 7PM to see the Gift Shop, chat,
and buy raffle tickets. The raffle starts at 7:15 PM.

YOU CAN NOW FIND US ON:



[https://www.facebook.com/pages/
San-Diego-Electric-Railway-Association/
241154262614173](https://www.facebook.com/pages/San-Diego-Electric-Railway-Association/241154262614173)

August 10

Two part slide program by Don Brown.

Part 1 the old PE PERy Exposition Line to
Santa Monica and companion pictures of the new
LAMTA line 60 + years later now partially func-
tional to Culver City

Part 2 (after the break) the old PERy Line
Monrovia and Glendora and the new LAMTA
Gold Line in the same area.

September 14

Jim Price presents via computer and projector

Part 1: Steamtown USA

Part 2: Electric City RR Museum

Part 3: Train trip home from back east
to San Diego

August 31

Chula Vista Live Steamers Fall Meet - to
September 2

The Chula Vista Live Steamers invites you
and your family to join us for time of fellow-
ship, fun and to run your 7 1/2 inch gauge
scale Railroad equipment on our 8,000 feet of
track. All types of equipment welcome.

Saturday Pot Luck at 5pm. Bring your own
chairs!